

# 2-JAW PARALLEL GRIPPERS

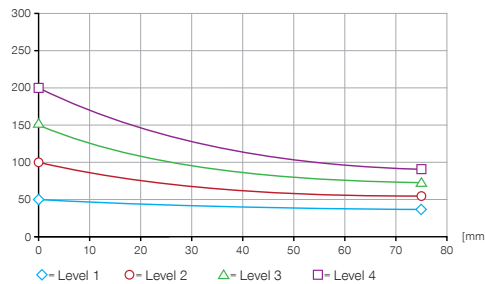
## INSTALLATION SIZE GEP2010

### ▶ PRODUCT SPECIFICATIONS



#### ▶ Gripping force diagram

Shows the arithmetic total of the individual forces that occur on the gripper fingers, depending on the gripper finger length



#### ▶ Forces and moments

Displays static forces and moments that can also have an effect, besides the gripping force.



Mr [Nm]	7
Mx [Nm]	7
My [Nm]	5.5
Fa [N]	200

### ▶ TECHNICAL DATA

Order no.	▶ Technical Data		
	GEP2010IL-00-A	GEP2010IO-00-A	GEP2010IO-05-A
Control	IO-Link	I/O	I/O
Integrated position sensing	Using process data	No	Analog 0 to 10 V
Stroke per jaw [mm]	10	10	10
Gripping force safety device	mechanical	mechanical	mechanical
Control time [s]	0.03	0.03	0.03
Permissible weight per jaw max [kg]	0.10	0.10	0.10
Length of the gripper fingers max. [mm]	80	80	80
Repetition accuracy +/- [mm]	0.05	0.05	0.05
Voltage [V]	24	24	24
Current consumption max. [A]	1	1	1
Operating temperature [°C]	+5 ... +60	+5 ... +60	+5 ... +60
Minimum positioning path per jaw [mm]	0.5	0.5	0.5
Protection to IEC 60529	IP40	IP40	IP40
Weight [kg]	0.31	0.31	0.31

### ▶ TECHNICAL DATA OF THE FORCE LEVELS

Order no.	▶ Level 1		
	GEP2010IL-00-A	GEP2010IO-00-A	GEP2010IO-05-A
Gripping force [N]	50	50	50
Closing time / Opening time [s]	0.3 / 0.3	0.3 / 0.3	0.3 / 0.3

Order no.	▶ Level 2		
	GEP2010IL-00-A	GEP2010IO-00-A	GEP2010IO-05-A
Gripping force [N]	100	100	100
Closing time / Opening time [s]	0.25 / 0.25	0.25 / 0.25	0.25 / 0.25

Order no.	▶ Level 3		
	GEP2010IL-00-A	GEP2010IO-00-A	GEP2010IO-05-A
Gripping force [N]	150	150	150
Closing time / Opening time [s]	0.22 / 0.22	0.22 / 0.22	0.22 / 0.22

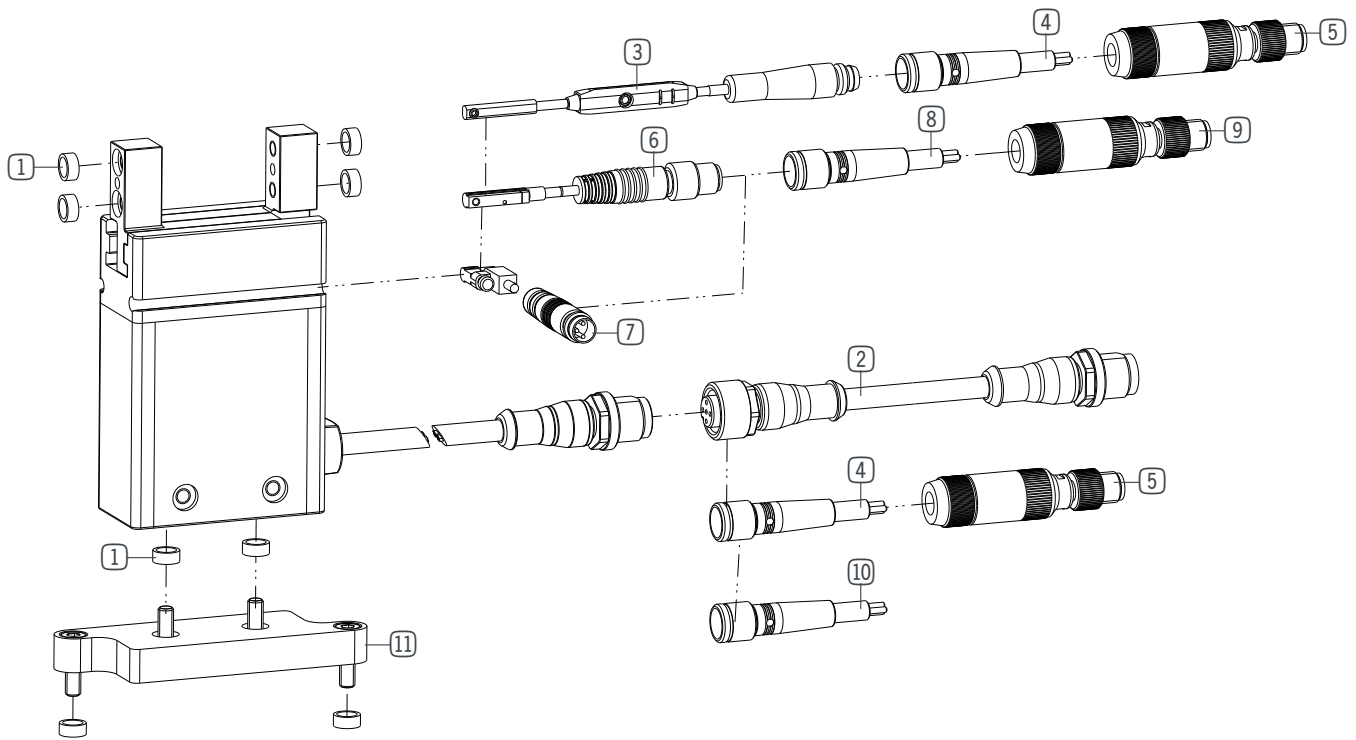
  

Order no.	▶ Level 4		
	GEP2010IL-00-A	GEP2010IO-00-A	GEP2010IO-05-A
Gripping force [N]	200	200	200
Closing time / Opening time [s]	0.19 / 0.19	0.19 / 0.19	0.19 / 0.19



# 2-JAW PARALLEL GRIPPERS

## INSTALLATION SIZE GEP2010



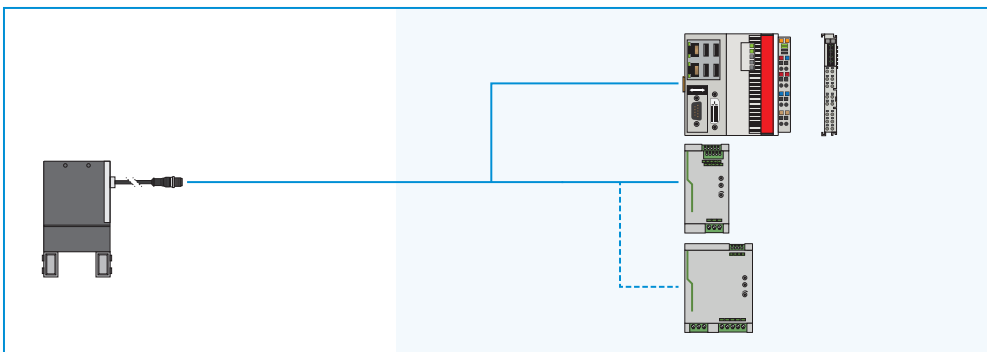
### ▶ INCLUDED IN DELIVERY



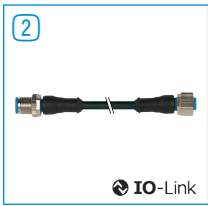
Centering Disc

390677

### ▶ YOU CAN FIND CONFIGURATION EXAMPLES ON PAGE 24 / 25



**▶ RECOMMENDED ACCESSORY GEP2010IL-00-A**



Plug-in connector straight  
5 m - plug, socket M12  
**KAG500IL**

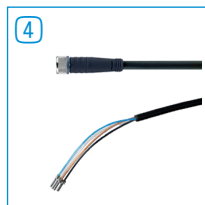


Adapter plate  
**AP2010**

**▶ RECOMMENDED ACCESSORY GEP2010IO-00-A**



2-Position-Sensor Cable  
0,3 m - Connector M8  
**MFSP2SKHC-02**



Plug-in connector Straight Cable  
5m - Socket M8 (female)  
**KAG500B4**



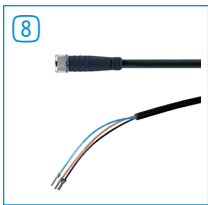
Plug-in connector customizable  
Straight - Connector M8  
**S8-G-4**



Magnetic field sensor Straight  
Cable 0,3 m - Connector M8  
**MFS204SKHC**



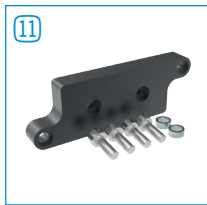
Magnetic field sensor Angled  
Cable 0,3 m - Connector M8  
**MFS103SKHC**



Plug-in connector Straight Cable  
5m - Socket M8 (female)  
**KAG500**

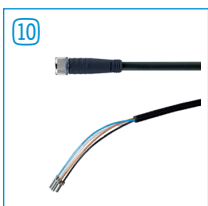


Plug-in connector customizable  
Straight - Connector M8  
**S8-G-3**



Adapter plate  
**AP2010**

**▶ RECOMMENDED ACCESSORY GEP2010IO-05-A**

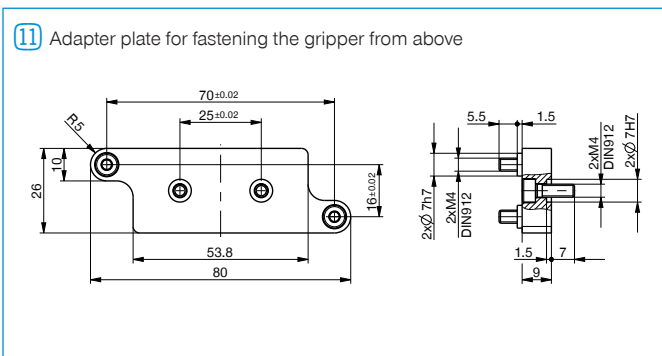


Plug-in connector Straight Cable  
5m - Socket M8 (female)  
**KAG500B5**



Adapter plate  
**AP2010**

**▶ TECHNICAL DRAWINGS ACCESSORIES**



# 2-JAW PARALLEL GRIPPERS

## SERIES GEP2000

### ▶ PRODUCT ADVANTAGES



#### “The electric compact one”

##### ▶ Largest stroke in small installation space

Do you require a large stroke, due to the fact that you are operating either a form fit gripper or a large range of parts but the installation space and the load capacity of your application is limited? Then this gripper is perfect for you!

##### ▶ Adjustable gripping force

Using pressures that are too high can damage your workpieces! You can optimally adjust the gripping force to your workpiece by means of the integrated potentiometer or over the control system via IO-Link.

##### ▶ The simplest activation

It is your choice whether you want to control the gripper by means of I/O ports—like a valve—or if you prefer the version with IO-Link. Both have this in common: they are easy to integrate into your control system.

### ▶ THE BEST PRODUCT FOR YOUR APPLICATION



#### ▶ Our products welcome the challenge!

Extreme conditions, all over the world—our tried and tested components and systems give you endless possibilities.

Find the best product for your specific use:

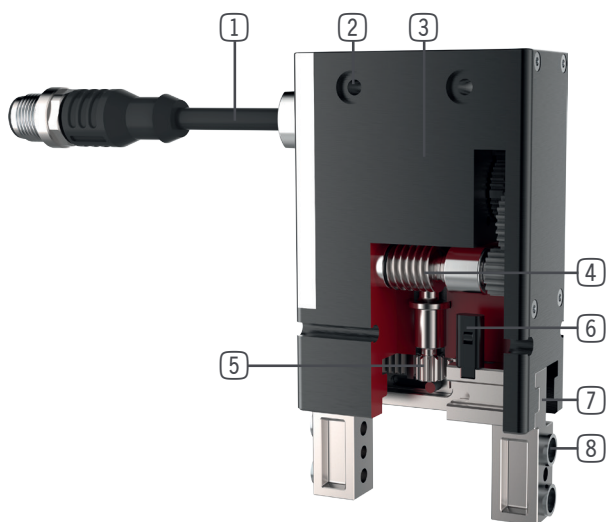
[www.zimmer-group.de](http://www.zimmer-group.de)

#### HOW TO ORDER CORRECTLY

▶ The product order numbers are arranged according to this diagram:

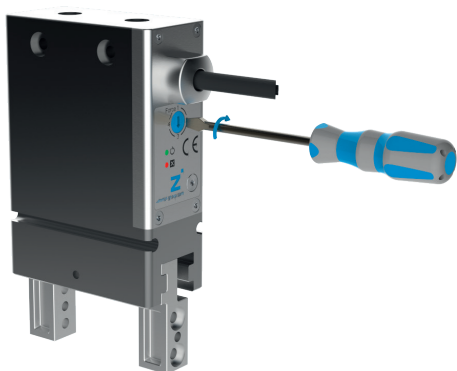
Order no.	GEP2013	<input type="checkbox"/>	- <input type="checkbox"/>	-A
IO-Link control	IL	00		
Digital control	IO	00		
Digital control + integrated analog sensing	IO	05		

## ▶ BENEFITS IN DETAIL



- ① **Control**  
- Via I/O ports (IO) or via IO-Link (IL)
- ② **Mounting and positioning**  
- mounting possible from several sides for versatile positioning
- ③ **BLDC motor**  
- wear-resistant brushless DC motor
- ④ **Helical worm gear**  
- self locking mechanism in case of power drop
- ⑤ **Synchronization**  
- via rack and pinion
- ⑥ **Position sensing**  
- Permanent magnet for direct query of jaw movement via magnetic field sensors
- ⑦ **Gripper jaw**  
- individual gripper finger mounting
- ⑧ **Removable centering sleeves**  
- quick and economical positioning of the gripper fingers

## ▶ SERIES CHARACTERISTICS



### Adjustable gripping force

- ▶ Four-level gripping force adjustment via rotary switch for digital gripper control
- ▶ For the IO-Link variant, gripping force can be conveniently adjusted using the control system



### Operating safety

- ▶ Mechanical self-locking mechanism, which means that in the event of a power failure, the workpiece is held securely
- ▶ Gripper can be mechanically opened by means of an Allen key